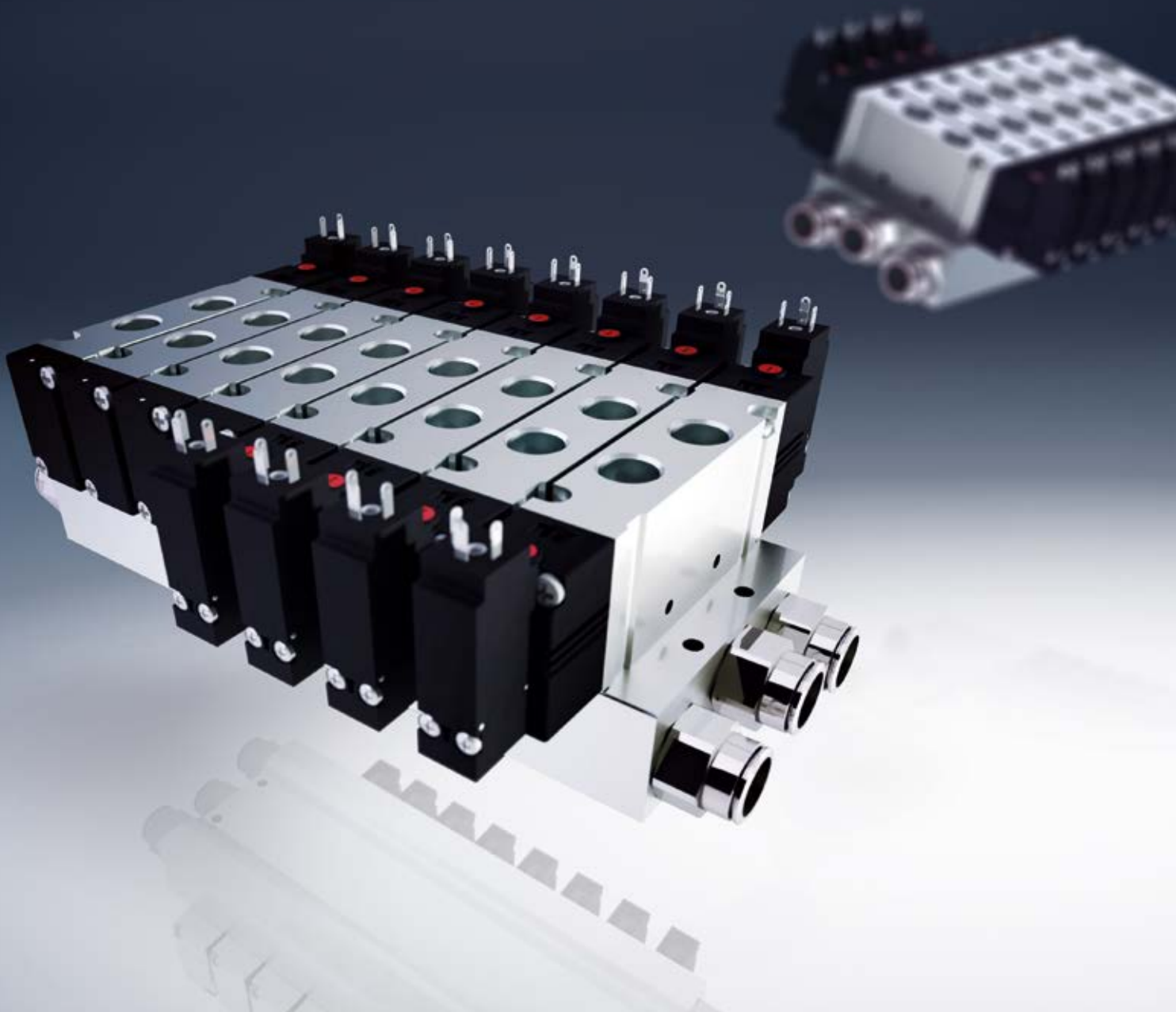


SERIES D - SIZE 4
POINT TO POINT
CONNECTION



SERIES D - SIZE 4 IDEAL FOR HIGH FLOW APPLICATIONS



DIFFERENT VOLTAGES
AVAILABLE

CAN BE USED INDIVIDUALLY
OR ON SUBBASE

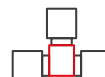
EN 175301-803
CONNECTION

The Series D range also includes size 4. Suitable for high flow applications, Series D can be used either individually or in parallel groups. An external servo pilot enables the Series D to be used in vacuum applications, whilst the large range of valve functions and a pneumatically operated version further expand the fields of application.

BENEFITS



**Low energy
consumption**



**Integral fittings
available as an option**

General data

PNEUMATIC SECTION	
Valve construction	spool with seals
Valve functions	5/2 monostable e bistable 5/3 CC - CO - CP 2 x 3/2 NC 2 x 3/2 NO 1 x 3/2 NC + 1 x 3/2 NO
Materials	body and spool in aluminium, spool seals in HNBR other seals in NBR
Connections	G 3/8
Temperature	0 ÷ 50 °C
Air specifications	filtered compressed air, non lubricated, class 6.4.4 according to ISO 8573-1:2010. If lubrication is necessary, please only use oils with maximum viscosity of 32 Cst and the version with external servo-pilot supply. The servo-pilot supply air quality class must be 6.4.4 according to ISO 8573-1:2010 (do not lubricate).
Valve sizes	25 mm
Working pressure	-0,9 ÷ 10 bar
Pilot pressure	3 ÷ 7 bar 4.5 ÷ 7 bar (with working pressure exceeding 6 bar for the version 2x3/2)
Flow rate	2000 NI/min
Mounting position	any position
Protection class	IP65
ELECTRICAL SECTION	
Max. absorption	1 W
Supply voltage	24 V DC ± 10%

Coding example

D	4	E3	VA	-	B	R	-	DS
D	SERIES							
4	SIZE: 4 = 25 mm							
E3	VERSION: A = for L and X plates P = pneumatic EB = 24V 50/60Hz EC = 48V 50/60Hz ED = 110V 50/60Hz E2 = 12V E3 = 24V E4 = 48V E6 = 110V							
VA	COMPONENT: 0 = for A version VA = valve with threaded body							
B	TYPE OF SOLENOID VALVE: (.Z) external servo pilot on the valve body M (MZ) = 5/2 monostable B (BZ) = 5/2 bistable P (PZ) = 3/2 NC Q (QZ) = 3/2 NO D (DZ) = 3/2 NC (valve M with output 2 closed) R (RZ) = 3/2 NO (valve M with output 4 closed) C (CZ) = 2 x 3/2 NC A (AZ) = 2 x 3/2 NO G (GZ) = 2 x 3/2 (NC + NO) V (VZ) = 5/3 CC K (KZ) = 5/3 CO N (NZ) = 5/3 CP PLATE: L = excluder free position X = additional supply and exhaust							
R	MANUAL OVERRIDE: 0 = for P version and L and X plates R = with push and turn device							
DS	CONNECTIONS: (.S) with silencers = for plate L and X T = thread D (DS) = ø 10 E (ES) = ø 12 F (FS) = ø 14							

Contacts

Camozzi Automation S.p.A.

Società Unipersonale
Via Eritrea, 20/I
25126 Brescia
Italy
Tel. +39 030 37921
info@camozzi.com

Customer Service

Tel. +39 030 3792790
service@camozzi.com

Export Department

Tel. +39 030 3792255
sales@camozzi.com

