

SERIES AP DIRECTLY OPERATED PROPORTIONAL VALVES



Series AP directly operated 2/2-way proportional solenoid valves, NC, with nominal diameters range from 0.8 to 2.4 mm, can be used where an open loop flow control is required, with gas mixtures, to control free flows or blows, or emptying chambers using vacuum.

Series AP proportional valves have been manufactured to optimize and reduce friction and stick-slip effects. The output flow is proportional to the control signal. As they can work also in vacuum, a minimum working pressure is not required.

2/2-way proportional valves, NC

Sizes: 16 - 22 mm

PWM or current operation

Open loop flow control

Suitable for use with oxygen

Several versions available:

With body in PVDF (size 16mm only)

With rear flanged bodies

With lower flanged bodies

Also suitable for use with vacuum

Seals in FKM and NBR

General data

Function	2/2 NC			
Operation	proportional directly operated			
Ports	M5 - G1/8 - with rear flanges - with lower flanges			
Hysteresis	Size 16mm: 12% FS Size 22mm: 10% FS			
Repeatability	Size 16mm: 7% FS Size 22mm: 7% FS			
Operating temperature	0 ÷ 60°C			
Medium	filtered compressed air, unlubricated, according to ISO 8573-1 class 3.4.3, inert gas. All the valves are suitable for use with oxygen.			
Installation	any position			
Materials	body = brass / PVDF (for size 16mm only) seals = NBR and FKM			
Nominal resistance	GP7	GPH	U711	U712
Rated current	193 ohm	48 ohm	85 ohm	22 ohm
	125 mA	250 mA	271 mA	542 mA

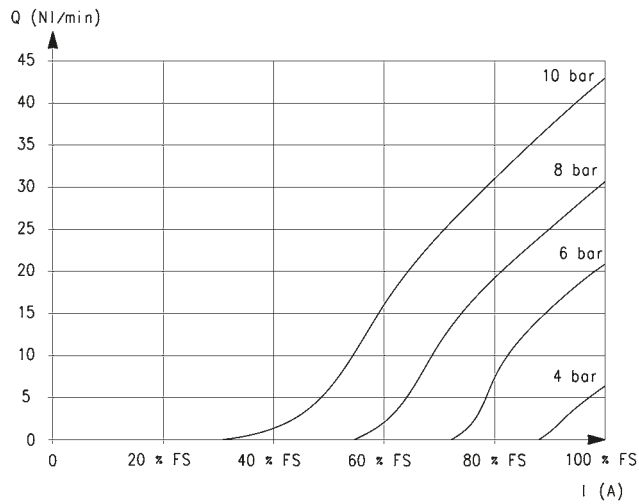
NOTE: Having a counterpressure on the outlet connection of at least 25% of the inlet pressure ensures the good functioning of the valve and improves its performance. Example: with inlet Pressure = 1 bar on the outlet connection, a min. counterpressure of 250 mbar is recommended.

Coding example

AP	-	7	2	1	1	-	L	R	2	-	U	7	11	OX2
-----------	----------	----------	----------	----------	----------	----------	----------	----------	----------	----------	----------	----------	-----------	------------

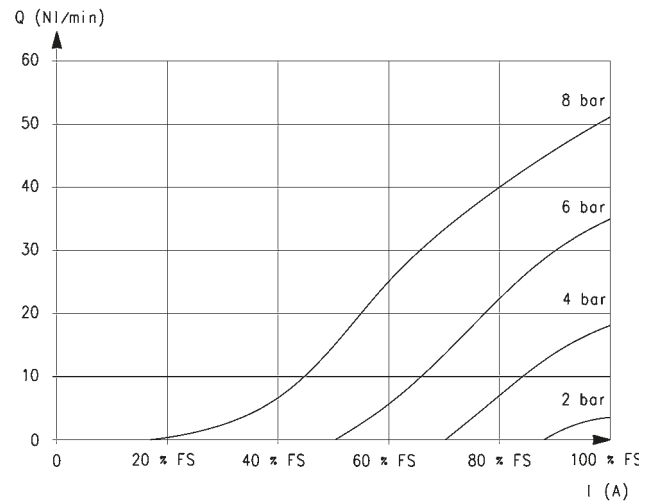
AP	SERIES
7	BODY: 6 = SIZE 16 MM 7 = Size 22 mm
2	NUMBER OF WAYS: 2 = 2-WAY
1	VALVE FUNCTION: 1 = NC
1	PORTS: 0 = M5 (for size 16 mm only) 1 = G1/8 (for size 22 mm only) L = male hose adaptor (for body in PVDF only, size 16 mm) 4 = with rear flanges 5 = with lower flanges
L	NOMINAL DIAMETER: D = ø 0.8 mm (for size 16 mm only) F = ø 1 mm H = ø 1.2 mm L = ø 1.6 mm N = ø 2 mm (for size 22 mm only) Q = ø 2.4 mm (for size 22 mm only)
R	SEAL MATERIAL: R = NBR W = FKM
2	BODY MATERIAL: 2 = brass 3 = PVDF (for size 16 mm only)
U	ENCAPSULATING MATERIAL: G = PA (for size 16 mm only) U = PET (for size 22 mm only)
7	SOLENOID DIMENSIONS: P = 16x26 DIN EN 175301-803-C (for size 16 mm only) 7 = 22x22 DIN 43650 B (for size 22 mm only)
11	SOLENOID VOLTAGE: H = 12 V DC 3 W (for size 16 mm only) 7 = 24 V DC 3 W (for size 16 mm only) 11 = 24 V DC 6.5 W (for size 22 mm only) 12 = 12 V DC 6.5 W (for size 22 mm only)
OX2	VERSION: OX2 = version with ASTM G93-03 Certification Level B (FKM seals only) = non-certified NBR version

FLOW DIAGRAMS - size 16mm



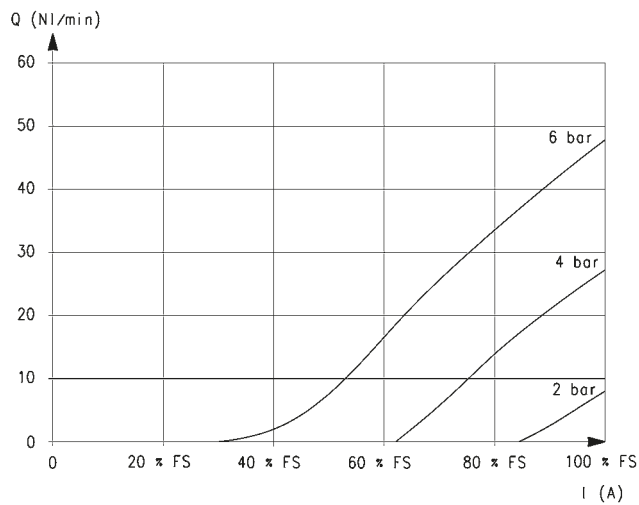
Nozzle 0.8mm

Q = Flow (NI/min)
I = Current (A)
FS = Full scale



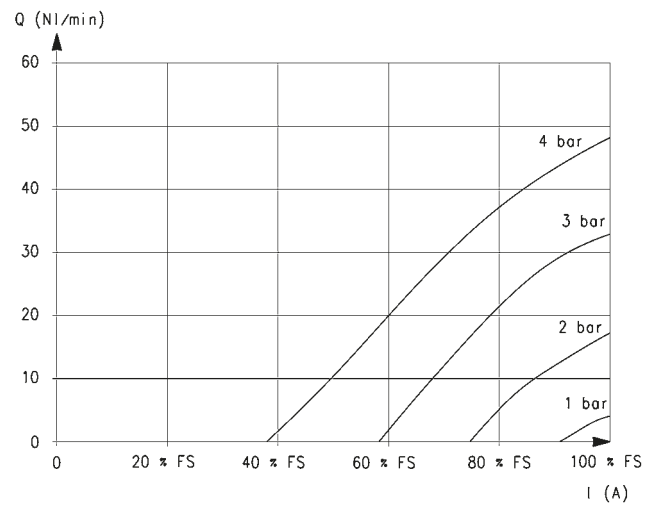
Nozzle 1mm

Q = Flow (NI/min)
I = Current (A)
FS = Full scale



Nozzle 1.2mm

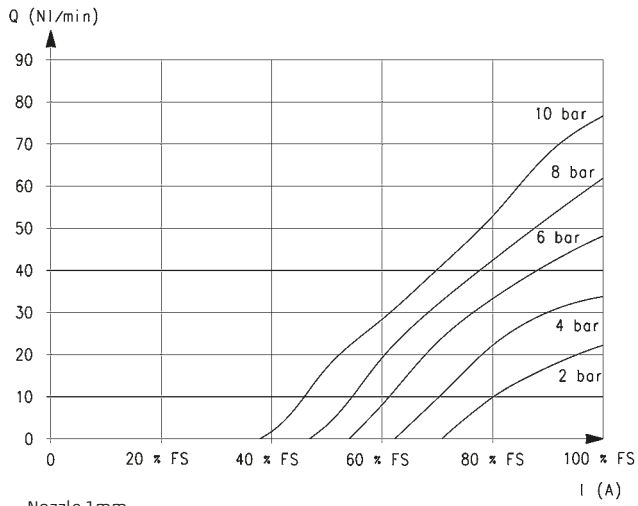
Q = Flow (NI/min)
I = Current (A)
FS = Full scale



Nozzle 1.6mm

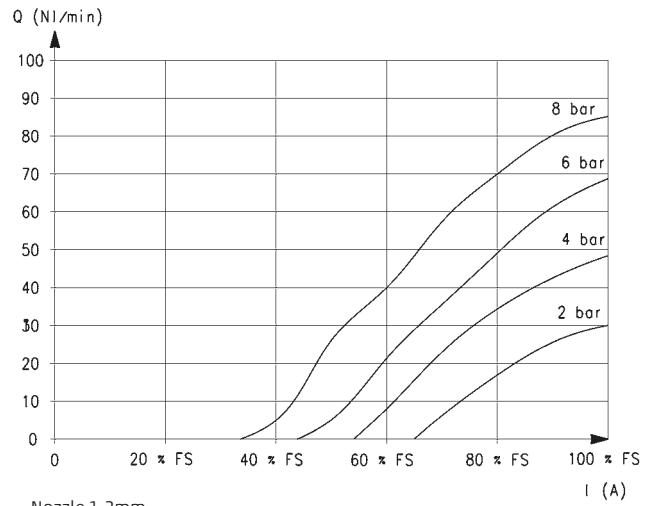
Q = Flow (NI/min)
I = Current (A)
FS = Full scale

FLOW DIAGRAMS - size 22mm



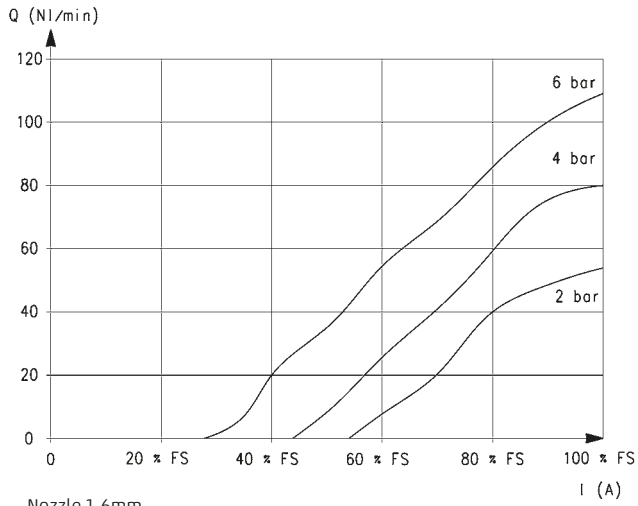
Nozzle 1mm

Q = Flow (NI/min)
I = Current (A)
FS = Full scale



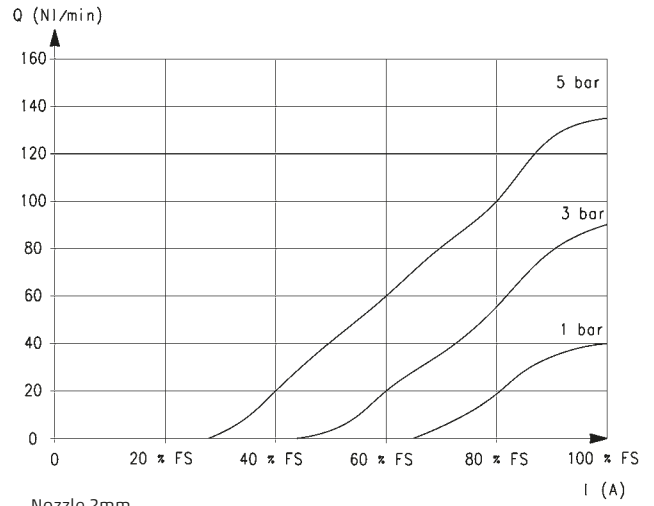
Nozzle 1.2mm

Q = Flow (NI/min)
I = Current (A)
FS = Full scale



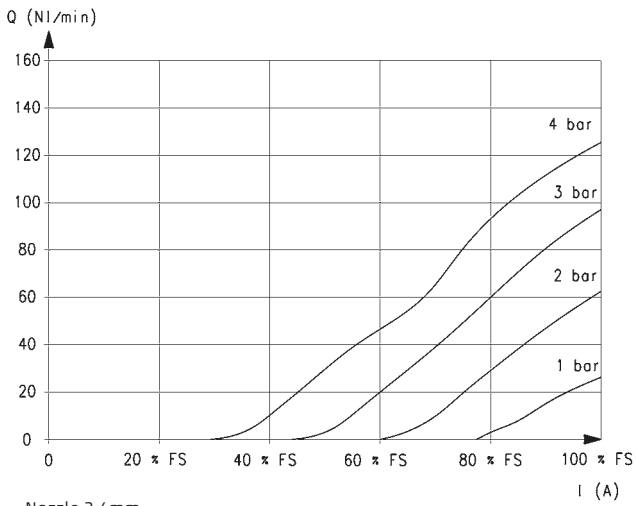
Nozzle 1.6mm

Q = Flow (NI/min)
I = Current (A)
FS = Full scale



Nozzle 2mm

Q = Flow (NI/min)
I = Current (A)
FS = Full scale



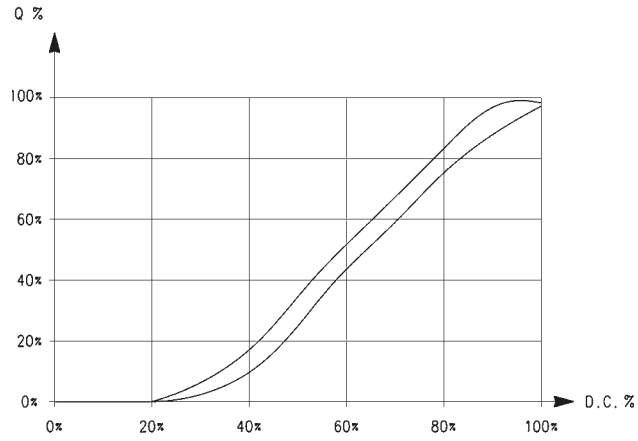
Nozzle 2.4mm

Q = Flow (NI/min)
I = Current (A)
FS = Full scale

FLOW GRAPH

Flow characteristic curve of a proportional valve

Q = flow
D.C. = duty cycle

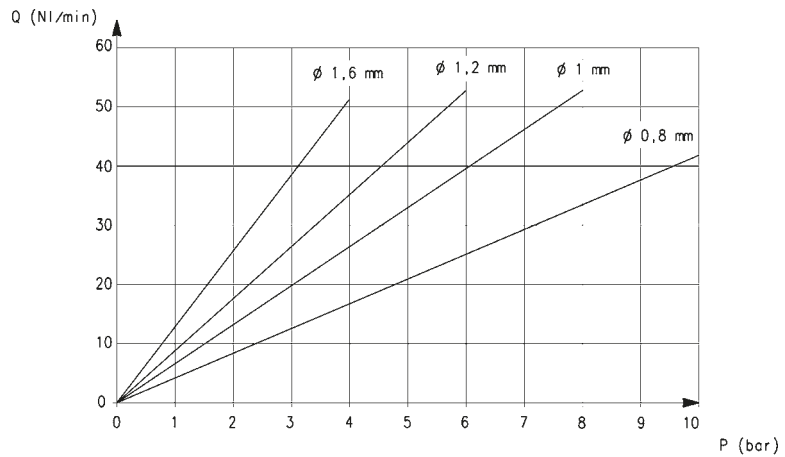


MAXIMUM FLOW AND RESPONSE TIMES - size 16mm

Maximum flow according to the inlet pressure

DIAGRAM LEGEND:

Q = flow (NL/min)
I = current (A)



RESPONSE TIMES calculated according to the maximum flow at each operating pressure. [Electromechanical response time: 10 ms]

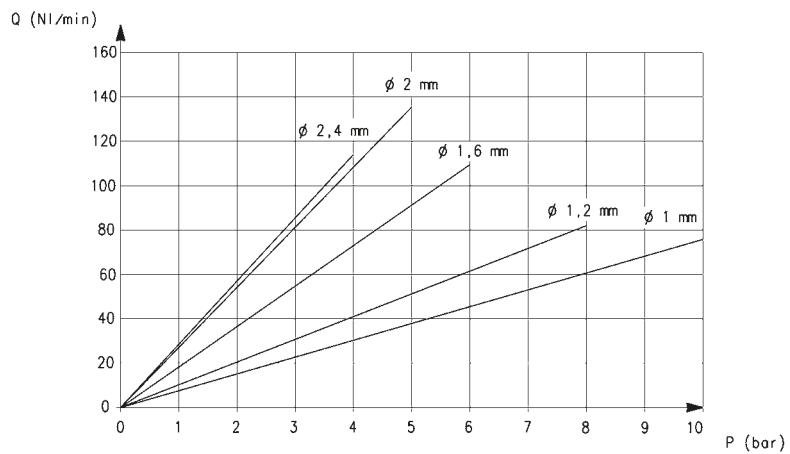
ø	Pin [bar]	Load response time [ms]			Exhaust response time [ms]		
		0% - 10%	0% - 90%	10% - 90%	100% - 90%	100% - 10%	90% - 10%
0.8 mm	10	12	43	31	11	39	28
1 mm	8	12	42	30	11	38	27
1.2 mm	6	10	41	31	11	41	30
1.6 mm	4	10	40	30	11	40	29

MAXIMUM FLOW AND RESPONSE TIMES - size 22mm

Maximum flow according to the inlet pressure

DIAGRAM LEGEND:

Q = flow (NL/min)
I = current (A)



RESPONSE TIMES calculated according to the maximum flow at each operating pressure. [Electromechanical response time: 10 ms]

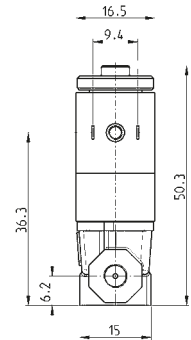
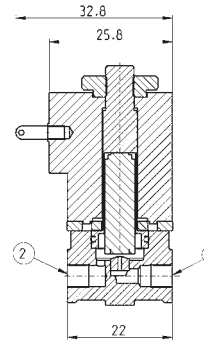
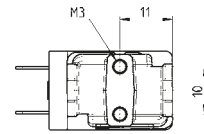
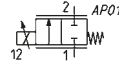
ø	Pin [bar]	Load response time [ms]			Exhaust response time [ms]		
		0% - 10%	0% - 90%	10% - 90%	100% - 90%	100% - 10%	90% - 10%
1 mm	10	10	36	26	10	36	26
1.2 mm	8	10	45	35	12	38	26
1.6 mm	6	12	45	33	12	40	28
2 mm	5	12	42	30	11	34	26
2.4 mm	4	11	45	34	12	44	32

Series AP proportional valves - size 16mm

For the use with vacuum connect the line to connection 2



* choose the desired voltage



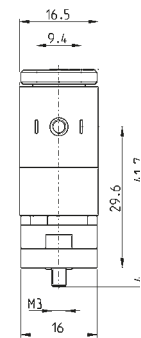
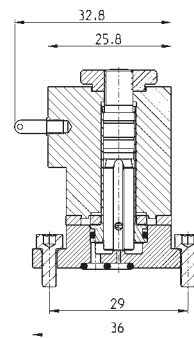
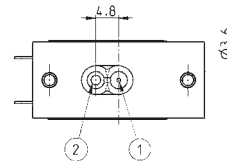
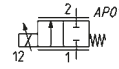
Mod.	Port 1	Port 2	Function	Orifice Ø (mm)	kv (l/min)	Max pressure (bar)	Max flow (NL/min)
AP-6210-DR2-GP*	M5	M5	2/2 NC	0.8	0.3	10	43
AP-6210-FR2-GP*	M5	M5	2/2 NC	1	0.45	8	53
AP-6210-HR2-GP*	M5	M5	2/2 NC	1.2	0.57	6	53
AP-6210-LR2-GP*	M5	M5	2/2 NC	1.6	0.78	4	52
AP-6210-DW2-GP*OX2	M5	M5	2/2 NC	0.8	0.3	10	43
AP-6210-FW2-GP*OX2	M5	M5	2/2 NC	1	0.45	8	53
AP-6210-HW2-GP*OX2	M5	M5	2/2 NC	1.2	0.57	6	53
AP-6210-LW2-GP*OX2	M5	M5	2/2 NC	1.6	0.78	4	52

Series AP proportional valves - size 16mm, with lower flanges

For the use with vacuum connect the line to connection 2



* choose the desired voltage



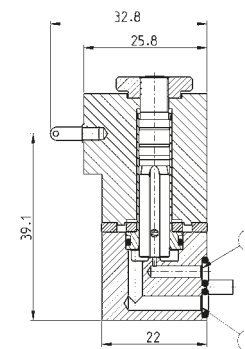
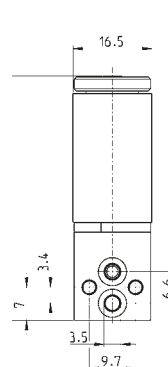
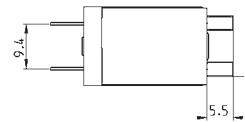
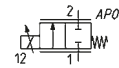
Mod.	Func.	Orifice Ø (mm)	kv (l/min)	Max pressure (bar)	Max flow (NL/min)
AP-6215-DR2-GP*	2/2 NC	0.8	0.3	10	43
AP-6215-FR2-GP*	2/2 NC	1	0.45	8	53
AP-6215-HR2-GP*	2/2 NC	1.2	0.57	6	53
AP-6215-LR2-GP*	2/2 NC	1.6	0.78	4	52
AP-6215-DW2-GP*OX2	2/2 NC	0.8	0.3	10	43
AP-6215-FW2-GP*OX2	2/2 NC	1	0.45	8	53
AP-6215-HW2-GP*OX2	2/2 NC	1.2	0.57	6	53
AP-6215-LW2-GP*OX2	2/2 NC	1.6	0.78	4	52

Series AP proportional valves - size 16mm, with rear flanges

For the use with vacuum connect the line to connection 2



* choose the desired voltage



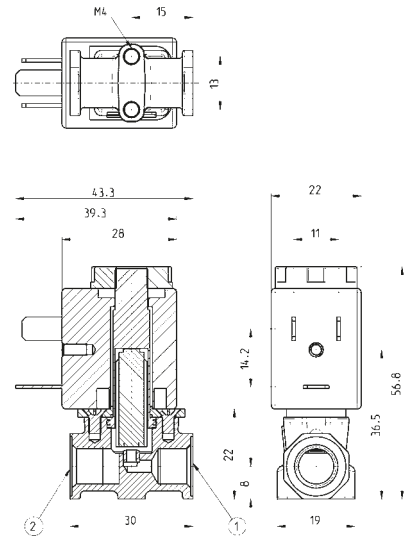
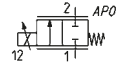
Mod.	Func.	Orifice Ø (mm)	kv (l/min)	Max pressure (bar)	Max flow (NL/min)
AP-6214-DR2-GP*	2/2 NC	0.8	0.3	10	43
AP-6214-FR2-GP*	2/2 NC	1	0.45	8	53
AP-6214-HR2-GP*	2/2 NC	1.2	0.57	6	53
AP-6214-LR2-GP*	2/2 NC	1.6	0.78	4	52
AP-6214-DW2-GP*OX2	2/2 NC	0.8	0.3	10	43
AP-6214-FW2-GP*OX2	2/2 NC	1	0.45	8	53
AP-6214-HW2-GP*OX2	2/2 NC	1.2	0.57	6	53
AP-6214-LW2-GP*OX2	2/2 NC	1.6	0.78	4	52

Series AP proportional valves - size 22mm

For the use with vacuum connect the line to connection 2



* choose the desired voltage



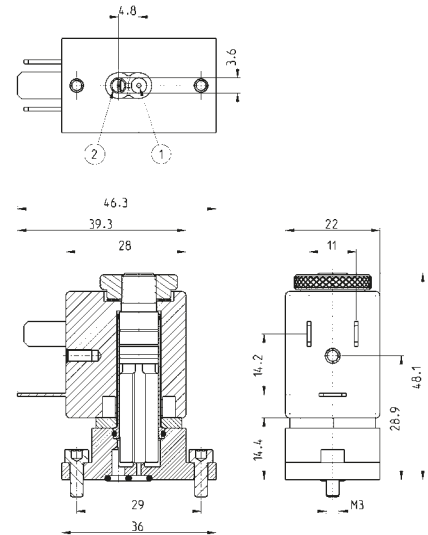
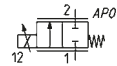
Mod.	Port 1	Port 2	Function	Orifice Ø (mm)	kv (l/min)	Max pressure (bar)	Max flow (NL/min)
AP-7211-FR2-U7*	G1/8	G1/8	2/2 NC	1	0.5	10	75
AP-7211-HR2-U7*	G1/8	G1/8	2/2 NC	1.2	0.7	8	85
AP-7211-LR2-U7*	G1/8	G1/8	2/2 NC	1.6	1.2	6	110
AP-7211-NR2-U7*	G1/8	G1/8	2/2 NC	2	1.7	5	135
AP-7211-QR2-U7*	G1/8	G1/8	2/2 NC	2.4	1.7	4	113
AP-7211-FW2-U7*OX2	G1/8	G1/8	2/2 NC	1	0.5	10	75
AP-7211-HW2-U7*OX2	G1/8	G1/8	2/2 NC	1.2	0.7	8	85
AP-7211-LW2-U7*OX2	G1/8	G1/8	2/2 NC	1.6	1.2	6	110
AP-7211-NW2-U7*OX2	G1/8	G1/8	2/2 NC	2	1.7	5	135
AP-7211-QW2-U7*OX2	G1/8	G1/8	2/2 NC	2.4	1.7	4	113

Series AP proportional valves - size 22mm, with lower flanges

For the use with vacuum connect the line to connection 2



* choose the desired voltage



Mod.	Func.	Orifice Ø (mm)	kv (l/min)	Max pressure (bar)	Max flow (NL/min)
AP-7215-FR2-U7*	2/2 NC	1	0.5	10	75
AP-7215-HR2-U7*	2/2 NC	1.2	0.7	8	85
AP-7215-LR2-U7*	2/2 NC	1.6	1.2	6	110
AP-7215-NR2-U7*	2/2 NC	2	1.7	5	135
AP-7215-QR2-U7*	2/2 NC	2.4	1.7	4	113
AP-7215-FW2-U7*OX2	2/2 NC	1	0.5	10	75
AP-7215-HW2-U7*OX2	2/2 NC	1.2	0.7	8	85
AP-7215-LW2-U7*OX2	2/2 NC	1.6	1.2	6	110
AP-7215-NW2-U7*OX2	2/2 NC	2	1.7	5	135
AP-7215-QW2-U7*OX2	2/2 NC	2.4	1.7	4	113

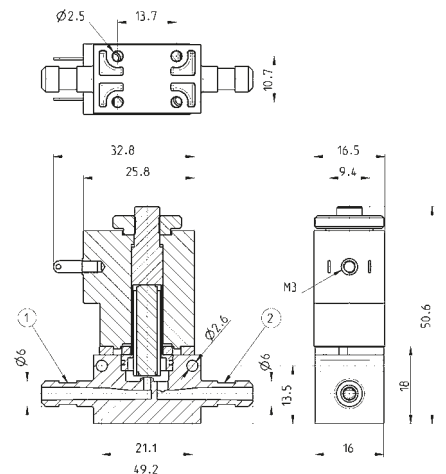
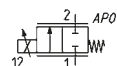
Series AP proportional valves, size 16mm - body in PVDF

For the use with vacuum connect the line to connection 2



* choose the desired voltage

** pneumatic connection with tube and clamps



Mod.	Port 1	Port 2	Function	Orifice Ø (mm)	kv (l/min)	Max pressure (bar)	Max flow (NL/min)
AP-6211-DR3-GP*	Ø6 **	Ø6 **	2/2 NC	0.8	0.3	10	43
AP-6211-FR3-GP*	Ø6 **	Ø6 **	2/2 NC	1	0.45	8	53
AP-6211-HR3-GP*	Ø6 **	Ø6 **	2/2 NC	1.2	0.57	6	53
AP-6211-LR3-GP*	Ø6 **	Ø6 **	2/2 NC	1.6	0.78	4	52
AP-6211-DW3-U7*OX2	Ø6 **	Ø6 **	2/2 NC	0.8	0.3	10	43
AP-6211-FW3-U7*OX2	Ø6 **	Ø6 **	2/2 NC	1	0.45	8	53
AP-6211-HW3-U7*OX2	Ø6 **	Ø6 **	2/2 NC	1.2	0.57	6	53
AP-6211-LW3-U7*OX2	Ø6 **	Ø6 **	2/2 NC	1.6	0.78	4	52

Contacts

fluid@camozzi.com

For further information about our products and conditions of sale,
please contact the Camozzi C_Fluid Control department at:

Camozzi Automation spa

Società Unipersonale
Via Eritrea, 20/I
25126 Brescia
Italy
Tel. +39 030 37921

Technical assistance

Product inquiries and requests for support:

Tel. +39 030 3792790
service@camozzi.com

Sales Department

Tel. +39 030 3792262
sales@camozzi.com



Automation

